



49er

49er NATIONAL and INTERNATIONAL OPEN CHAMPIONSHIPS

NOTICE OF RACE

At the Weymouth and Portland National Sailing Academy (WPNSA), Weymouth and Portland, Great Britain.

Organised by WPNSA under the burgee Portland Castle Sailing Club in conjunction with the 49er National Class Association from August 23rd-25th 2008

1.0 RULES

- 1.1 The regatta will be governed by rules as defined in the Racing Rules of Sailing (RRS) 2005-2008 and the Sailing Instructions.
- 1.2 The Class and Championship Rules of the 49er Class Associations will apply.
- 1.3 The Organising Authority is Weymouth and Portland National Sailing Academy, under the burgee of Portland Castle Sailing Club. In the event of any conflict, the Sailing Instructions and local Sailing Instructions shall prevail.

2.0 ADVERTISING

- 2.1 The regatta will be classified as a Category "C" Classes in accordance with the ISAF Regulations.
- 2.2 The organising authority may ask competitors to display Event and Class sponsor advertising material. Boats may be asked to carry stickers carrying sponsor advertising provided at registration. These should be attached to the boat in accordance with the instructions provided by the Organiser and displayed in the following areas:
 - Forward 25% of both sides of the hull for Venue Sponsor as per ISAF guidelines.
 - Other advertising as per request from class and organising committee. This may be on the jib and main sail.

3.0 ELIGIBILITY AND ENTRY

- 3.1 Competitors shall comply with ISAF Eligibility Rules.
- 3.2 All competitors shall be fully paid-up members the 49er National Class Association.
- 3.3 Entries should be received by WPNSA no later than 18th July 2008. For entries received later than this date see 4.1.
- 3.4 The details of how to enter will be posted on the relevant class website, <http://www.49er.org.uk>
- 3.5 Competitors will need to complete the event entry form and send this with the appropriate entry fee to WPNSA.
- 3.6 All sailors under 18 must produce a completed Parent / Guardian consent and declaration form Without a completed form sailors aged under 18 will NOT be allowed to complete registration.

4.0 FEES

- 4.1 Entry Fee:
 - £75 (Until July 18th 2008 inclusive)
 - £100 (Thereafter)
- 4.2 A boat starting without being able to prove that the entry fee has been paid will not be scored.
- 4.3 Entries will only be accepted if made and signed on the official event entry form
- 4.4 Entry fees will not be refunded.

5.0 SCHEDULE OF EVENTS

Date	EVENT
Saturday 23 rd August	08:00 – 10:00 Registration
	1 st Race Day - first warning signal 12 noon
Sunday 24 th August	2 nd Race Day
	EVENING RECEPTION
Monday 25 th August	3 rd race day -
	BBQ

6.0 EQUIPMENT AND MEASUREMENT CHECKS

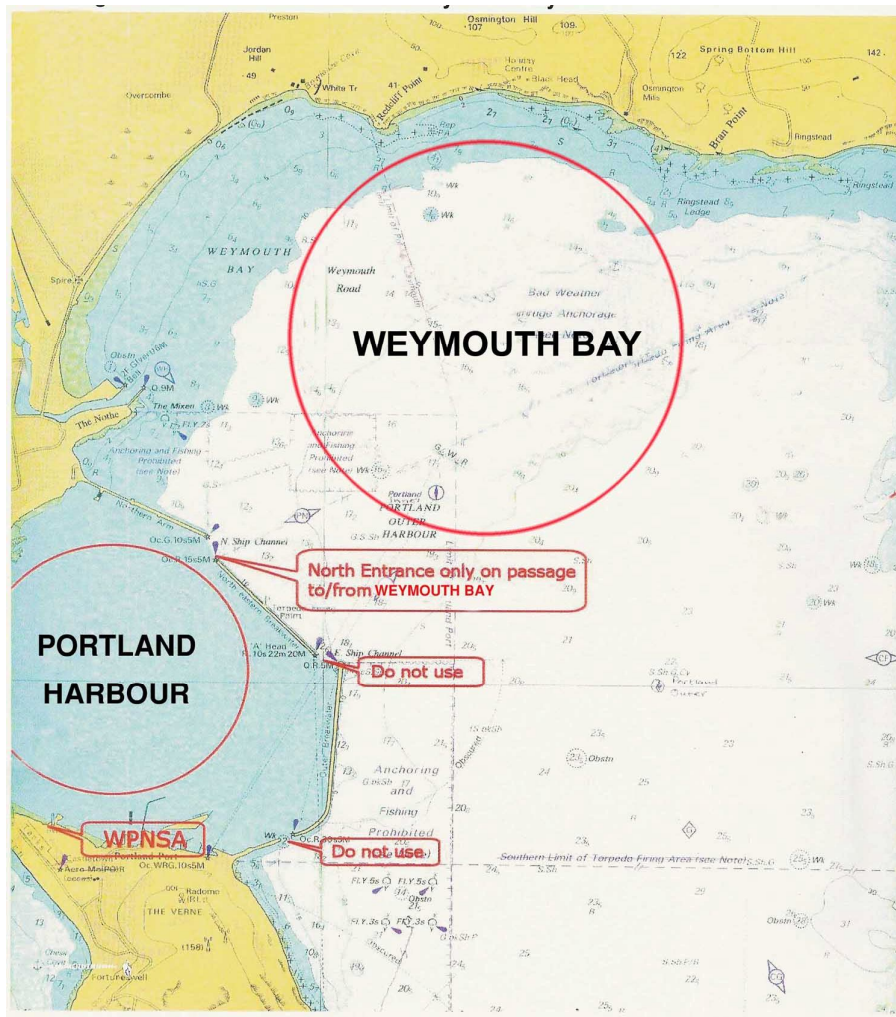
- 6.1 All boats must complete the self Certification form before racing.
 6.2 Only one set of sails shall be used throughout the duration of the Championship. One forestay shall be used.
 6.3 Equipment shall only be replaced with permission of the Jury.

7.0 SAILING INSTRUCTIONS

The Sailing Instructions will be available at registration (times shown in the Schedule of Events) and may be available sooner on the 49er Class and/ or WPNSA websites.

8.0 VENUE

The 2008 49er National championships will be held at Weymouth and Portland National Sailing Academy (directions given in Attachment A). The following diagram shows the racing areas- Weymouth Bay and Portland Harbour.



9.0 COURSES

All courses will be windward/leeward with a gate at the leeward end of the course.

10.0 PENALTY SYSTEM

- 10.1 RRS 44.2 is amended so that the Two-Turns penalty is replaced by a One-Turn penalty, including one tack and one gybe.
- 10.2 Decisions of the International Jury will be final as provided in rule 70.4.

11.0 SCORING AND FORMAT

- 11.1 The Low Points Scoring System will be used.
- 11.2 If numbers of boats exceeds 50 racing may take place in fleets of approximately equal numbers of boats, except that in the finals no more than 25 boats will sail in the gold fleet.
- 11.3 Qualification and Final Series may be held.
- 11.4 The courses and format of racing will be detailed in the Sailing Instructions

12.0 SUPPORT BOATS

- 12.1 Support boats and coach boats shall be marked with their national flag or country code.
- 12.2 Support boats will need to register at WPNSA reception and attend the daily safety briefings
- 12.3 If called upon support boats will be required to act as rescue boats.

13.0 BERTHING

Boats shall be kept in their assigned places.

14.0 RADIO COMMUNICATION

A boat shall neither make radio transmissions while racing nor receive radio communications not available to all boats. This restriction also applies to mobile telephones.

15.0 PRIZES

Prizes will be announced and awarded as per the Schedule of Events. Details of the prizes may be listed in the Sailing Instructions

16.0 DISCLAIMER

- 16.1 A boat is entirely responsible for her own safety, whether afloat or ashore, and nothing, whether in the Notice of Race or Sailing Instructions or anywhere else, reduces this responsibility.
- 16.2 It is for the boat to decide whether she is fit to sail in the conditions in which she will find herself. By launching or going to sea, the boat confirms that she is fit for those conditions and her crew is competent to sail and compete in them.
- 16.3 Nothing done by the organisers can reduce the responsibility of the boat nor will it make the organisers responsible for any loss, damage, death or personal injury, however it may have occurred, as a result of the boat taking part in the racing. The organisers encompass everyone helping to run the race and the event, and include the organising authority, the race committee, the race officer, patrol boats and beach-masters.
- 16.4 The provision of patrol boats does not relieve the boat of her responsibilities.
- 16.5 The fact that the race committee conducts inspections of a boat does not reduce the responsibilities of the boat as set out in this paragraph.

17.0 INSURANCE

Boats are required to hold adequate insurance and in particular to hold insurance against third party claims in the sum of at least £2,000,000 or the equivalent foreign currency.

18.0 SAFETY REGULATIONS

- 18.1 Life-jackets or other adequate personal buoyancy shall be worn by all competitors at all times whilst afloat. Wet-suits and dry-suits are not adequate personal buoyancy.
- 18.2 A compulsory tally system will be in operation. All competitors must tally off before going afloat, and tally in again as soon as they return to shore.

19.0 TELEVISION AND MEDIA

In entering for this event, competitors automatically grant the organising authority and Class Association(s) the right, in perpetuity, to make, use and show from time to time, at their discretion, any motion pictures, still pictures and live, taped or filmed television and any other reproduction of them taken during the event, for the said Championship as defined in the Notice of Race and Sailing Instructions, in which he/she participates, without compensation.

20.0 ACCOMMODATION

Competitors can contact the Weymouth Tourist Information Centre for assistance in finding accommodation (+44 1305 788092 or www.weymouth.gov.uk/Visitors/Tic). WPNSA also have an accommodation list, please email or call to be sent a copy (+44 1305 866000 or reception@wpnsa.org.uk.) Please be reminded that Weymouth and Portland are popular tourist destinations. We recommend that you book your accommodation as soon as possible.

21.0 FURTHER INFORMATION

For further information please contact WPNSA

Email: reception@wpnsa.org.uk or phone 01305 866000

Attachment A

Contact Details and Directions to The Weymouth and Portland National Sailing Academy

(These can also be found with a link to Multimaps on the WPNSA website- <http://www.wpnsa.org.uk/contact.htm>)

Address

WPNSA, Osprey Quay, Portland, Dorset, DT5 1SA

T: 01305 866000

F: 01305 866001

E: reception@wpnsa.org.uk

W: www.wpnsa.org.uk

Directions:

From Dorchester

Take A354 to Weymouth

When you arrive at Weymouth

Take the A354 to Portland. This will bring you to the causeway linking Weymouth and Portland. Halfway along the causeway

From Poole and Bournemouth

Take A352 to Weymouth

you will reach a mini-roundabout. Turn left, we are signposted 'Sailing Academy'.

From Bridport

Take B3157 to Weymouth

Map :

